

2"

EAGLE 200

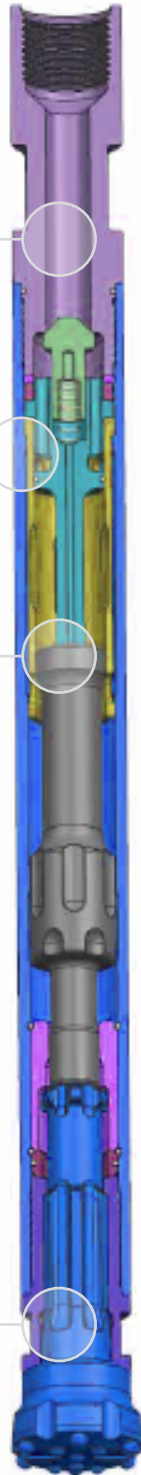


One piece top-adaptor reduces internal parts. No make up required.

Revised chamber volumes and cycle timing to optimize performance.

Simplified piston geometry for improved balance and location within the cylinder.

IDS shank reduces contact stresses and wear rates. With full chuck support.



The Eagle 200 is designed for small diameter drilling operations. Its superior drilling performance makes it one of the fastest small hammers on the market. The valveless design of the Eagle 200 provides high performance at both low and high pressures. The Eagle 200's robust design allows it to withstand heavy duty applications. A non-return-valve (N.R.V) is fitted into the Eagle 200 to prevent flooding where ground water is present. The unique drill bit design for the Eagle 200 does not use foot valves which reduces the possibility of hammer failure.

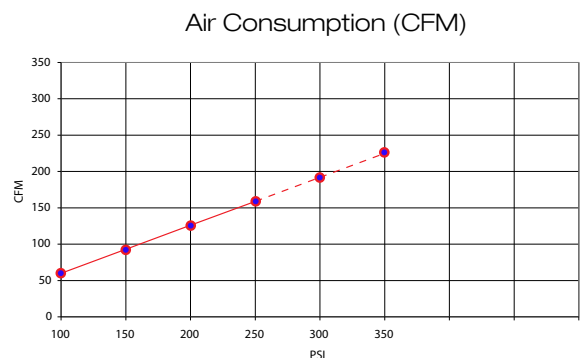
Suitable for operation at air pressures of 100 - 250 psi (7- 17 bar).

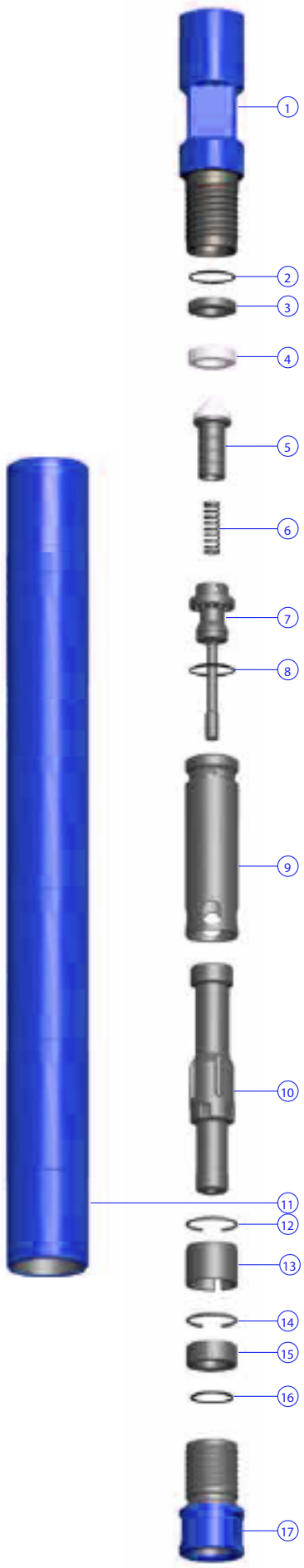
Drilling diameters of 70 - 76mm (2 3/4 - 3").

Available Shanks

IDS 2

Air Consumption





Hammer Overview

Hammer Type	Eagle 200
Part Number	E120200
Shank	IDS 2 Shank
Top Thread	50mm DIN 405 6 TPI BOX
Hammer Flat Size	48 mm (1.890")
Weight	12.4 Kg
Outside Diameter	62 mm (2.44")
Make Up Length	817 mm (32.16")
Recommended Maximum Thrust	150 Kg (330 lbs)

Parts List

Hammer Type	Eagle 200	SK02	RK02
Shank	IDS 2		
Model Number	E120100	Contents	
Item	Description	Quantities	
1	Top Adaptor	-	-
2	O' Ring	1	1
3	Spacer Ring	-	1
4	Make-Up Ring	1	1
5	N.R.V	-	1
6	Spring	1	1
7	Air Distributor	-	-
8	O' Ring	1	1
9	Liner	-	-
10	Piston	-	-
11	Cylinder	-	-
12	Snap Ring	2	2
13	Bit Guide Bush	-	-
14	Snap Ring	-	1
15	Bit Retaining Ring	-	1
16	O' Ring	1	1
17	Chuck	1	1
	Service Kit	SK02	
	Repair Kit	RK02	

Drill Bits

Diameter		Face Design	Buttons Type	Buttons Qty/Dia	Weight (kg)
mm	Inch				
70	2 3/4	Flat	Domed	4x9mm / 6x11 mm	2.4
76	3	Flat	Domed	5x9mm / 6x11 mm	2.5

Additional drill bit configurations are available upon request